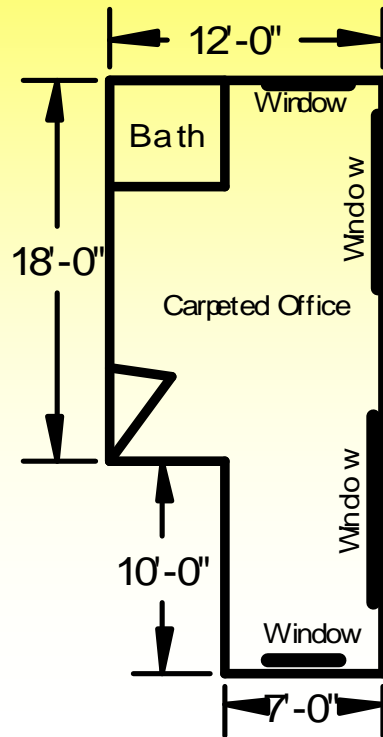


Central Office Space for Lease

2829 East Platte 80909—300 Square Feet

In Popular TOWER PLAZA at N. Circle Dr. & E. Platte Ave. SE Corner



This 300 SF nicely finished Office space with private bathroom was the Shopping Center owner's private office years in this high traffic, well-maintained center on Circle Drive at Platte Avenue. It is a second floor space near to Bambino's Restaurant. Central business location. Join a good mix of businesses, including a drive-up hamburger shop, Midas Muffler, SS Subs, Performance Audio, Flower Stop and quality other merchants. Signage on building and possibly on Tower Plaza main signpost. High traffic without Academy prices!



Lease Rate \$600.00
per month Gross
includes utilities

Details:

- ◆ 300 Square Feet +- (see diagram)
- ◆ Zoning is C6—Colorado Springs
- ◆ 2nd floor in elevator served building
- ◆ Free parking in front and behind
- ◆ Year of construction 1978
- ◆ PPCIE#2095081 Loopnet#16677192

CONTACT:

Chuck Armstrong
719-634-0500
Cell 231-3545

Chuck@TheSpaceTeam.com



Chuck Armstrong, Commercial Broker Associate
Weichert Commercial Affiliates

411 South Tejon Street, Suite A—Colorado Springs, Colorado 80903
Cell 719-231-3545, Direct 719-667-4328, Switchboard 719-634-0500

Fax 719-634-3086 - email Chuck@TheSpaceTeam.com

Website: www.WeichertPikesPeak.com



All information is from sources deemed reliable and is subject to errors, omissions, change of price, rental, prior sale, and withdrawal without notice. PROSPECT SHOULD CAREFULLY VERIFY EACH ITEM OF INFORMATION CONTAINED HEREIN. May, 2010

Weichert Commercial Affiliates - Colorado Springs, Colorado



Bathroom door and vertical blinds in Office area.



View from Office window to the West showing mountain/Pikes Peak view!



Built-in desk, wall cabinets and window to hallway/stairs in the smaller north end of the space



Private Office with floor-ceiling vertical blinds closed.



2829 East Platte, in Tower Plaza Shop. Ctr.



Office Window from Hallway

Lease Rate \$600/mo
including utilities

CONTACT:
Chuck Armstrong
719-634-0500
Cell 231-3545
Chuck@TheSpaceTeam.com