

Central Retail/Office Space for Lease

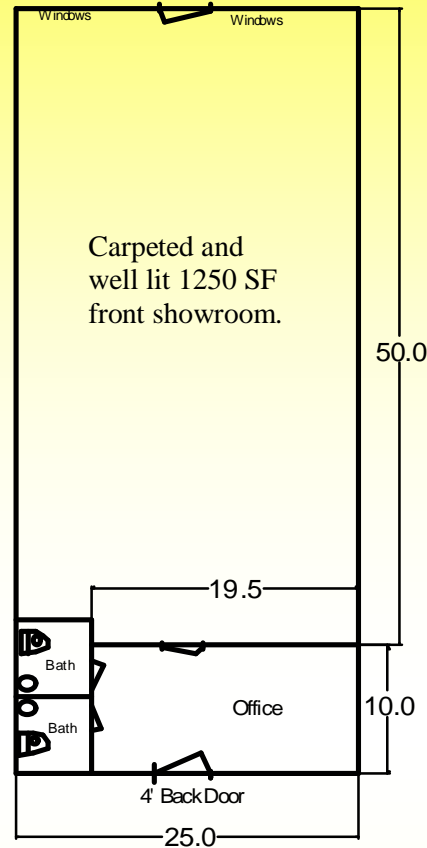
2813 East Platte 80909—1500 Square Feet

In Popular TOWER PLAZA at N. Circle Dr. & E. Platte Ave. SE Corner

Your Lighted Sign Here!



This 1500 SF nicely finished Office/Retail space was a Jackson Hewitt Tax office for the past 5 years in this high traffic, well-maintained center on Circle Drive at Platte Avenue. Central business location. Join a good mix of businesses, including a drive-up hamburger shop, Midas Muffler, Bambino's Restaurant, SS Subs, Performance Audio, Flower Stop and quality other merchants. Great Signage on building and on Tower Plaza main signpost. High traffic without Academy prices!



Lease Rate \$12.00/SF
(\$1500/month Gross)
includes utilities

Details:

- ◆ 1500 Square Feet +- (60' x 25')
- ◆ Zoning is C6—Colorado Springs
- ◆ Free parking in front and behind
- ◆ Year of construction 1978
- ◆ PPCIE#1515232 Loopnet#15400362

CONTACT:

Chuck Armstrong
719-634-0500
Cell 231-3545

Chuck@TheSpaceTeam.com



Chuck Armstrong, Commercial Broker Associate
Weichert Commercial Affiliates

411 South Tejon Street, Suite A—Colorado Springs, Colorado 80903
Cell 719-231-3545, Direct 719-667-4328, Switchboard 719-634-0500
Fax 719-634-3086 - email Chuck@TheSpaceTeam.com
Website: www.WeichertPikesPeak.com



All information is from sources deemed reliable and is subject to errors, omissions, change of price, rental, prior sale, and withdrawal without notice. PROSPECT SHOULD CAREFULLY VERIFY EACH ITEM OF INFORMATION CONTAINED HEREIN. February, 2010

Weichert Commercial Affiliates - Colorado Springs, Colorado



**Lease Rate \$12.00/SF
(\$1500/month Gross)
*including utilities***

**CONTACT:
Chuck Armstrong
719-634-0500
Cell 231-3545
Chuck@TheSpaceTeam.com**